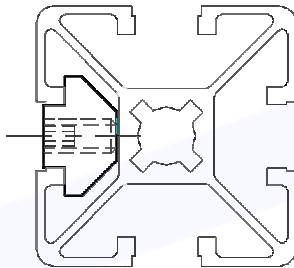
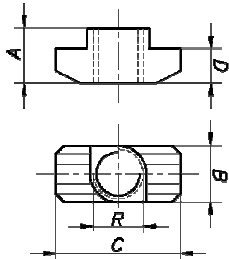


➤ **SÉRIE 30**

Porca "T" M 6

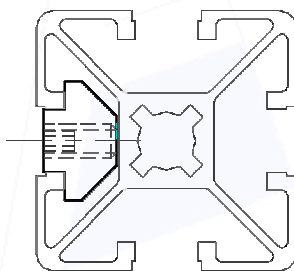
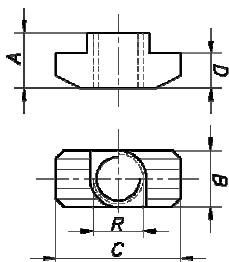


Informações Técnicas

A - 6,7 mm
 B - 7,8 mm
 C - 13,4 mm
 D - 5,1 mm
 R - M 6

➤ **SÉRIE 40/45**

Porca "T" M 8



Informações Técnicas

A - 10,0 mm
 B - 10,0 mm
 C - 19,0 mm
 D - 5,0 mm
 R - M 8

AFLEX AUTOMAÇÃO FLEXÍVEL, COMÉRCIO INDÚSTRIA E IMPORTAÇÃO LTDA.

Rua Silvio de Souza, 58
 CEP.: 03273-500
 E-mail: aflex@aflex.com.br

Jd. Silveira
 PABX
 (11) 6101-1333

São Paulo – SP - Brasil
 FAX.:
 (11) 6101-2666